

EMPOWERMENT FOR REHABILITATION, ACADEMIC & HEALTH (EFRAH)

Annual Report

2012-2013



Office- Community Centre, 2nd Floor, DDA Flats, Kalkaji
Behind DDA Flats Mini Market, New Delhi-110019

Regd. Office- Flat Number 393, Block Number 13, DDA Flats, Kalkaji, New Delhi- 110019

Phone Number: +91-11-26020132, 29946107, 29948068, 29946270, **Fax:** +91 11 26020132

Email: efracindia@gmail.com, **Website-** www.efracindia.org.in

FROM THE SECRETARY 'S DESK

EFRAH, a grass root level non-government organization, was institutionalized 13 years ago in 1999 under Indian Societies registration Act'1860. It is founded with the vision of a society of people, the disadvantaged population groups/communities in particular, free from poverty, experiencing a social transformation for fulfillment of basic rights and having an improved social and economic development. It pursues a mission to create conditions for increased access of the target groups and the communities within which they live, to public and private services and enhance capacities of such communities to maximally utilize such services particularly in four interconnected areas of Education, Livelihood Development, Health and Human Rights/Social Justice with Environment being a crosscutting theme. The organization federally operates in addressing the different issues of Education, Health & Livelihood along with the advocacy on Right to Education Act implementation, Domestic Violence and Child Protection in South and south west Delhi. With the philosophy of development and humanitarian service, EFRAH came across another year of its manifold, divergent and diverse activities. This report touches on the more significant activities, garnering only their important features. We have sought the views of the beneficiaries of our major intervention for the school/out of school children partnership in education.

The annual report of EFRAH (Empowerment for Rehabilitation, Academic & Health) for 2012-2013 assimilates its various interventions in the field of education, health, legal rights and livelihood generations during the year. We have sought the views of the beneficiaries of our major intervention for the school/out of school children partnership in education. This report touches on the more significant activities, garnering only their important features. This year we initiated our targeted intervention with Migrants.

We are thankful to our team members and stakeholders for giving us their valuable insights and observations, thereby enabling us to understand how our programs have been working, what impact they have made, and what more can be done to improve their effectiveness and extend their reach. There is much to be satisfied about and much to be learned from these views. For, EFRAH, this Annual Report is an exercise in self appraisal with the assistance & guidance of those who have a stake in the success of its social programs. Their suggestions for improvement are always welcome.

With all the best wishes.

Sayeed Ahmed
Secretary



TABLE OF CONTENTS

Si No	Particular	Page No
A	About Organization/EFRAH Profile	4
B	Executive Summary	5-6
1	Education 1.1 Integrated Learning Centers 1.2 Mid Day Meal 1.3 Vocational Training 1.4 Community Awareness on RTE 1.5 Community Bases Groups 1.6 School Library Program 1.7 Social & Financial Education	7 - 12
2	Health 2.1 Targeted Intervention with FSW 2.2 Targeted Intervention with Migrants 2.3 Reproductive & Child Health 2.4 Health Camp	12- 13
3	Gender 3.1 Self Help Group Management & Vocational Training 3.2 Help Desk 3.3 Domestic Violence	14
4	Rights 4.1 RTE & Awareness 4.2 Public Hearing	15-16
5 to 7	Challenges, Acknowledgement and Organizational Structure	16-17
8 to 9	Funding Partners & Office Address	18
10	Financial Statement	19
11	Financial Facts	19



A. EFRAC's Profile

Empowerment for Rehabilitation Academic & Health (EFRAC) is a Non-Governmental Organization started in 1997 and came in legal existence on 17th March 1999 through getting Registration under society registration act 21 of 1860 and its Registration No is S-34553 in Delhi (India). It is registered under foreign contribution registration act 6 (1) (a), registration No. 231660324 as well as registered under Income tax act of 80G and under the 12. The core area of EFRAC intervention is Education, life skills, Vocational Training, Self Help Group formation, Micro Finance, RCH programme, HIV/Aids and Adolescents development program. These programs are ongoing in South and south west Delhi district (Srinivaspuri, Okhla, okhla industrial area, Sangam Vihar, Tughlakabad, Madanpur Khadar J.J. colony, Aali Village, Aali Vihar, Gautam Puri Resettlement colony, Molar Band, Meethapur, Badarpur /Badarpur Border, Jaitpur, Sarita Vihar area) along with 84 MCD schools of central/west zone of Delhi and in Auraiya and Etawah Districts of Uttar Pradesh. Our capacities to carry out the project are our thirteen years rapport with the community and our experience to implement several community development programs, especially in the area of education and women empowerment.

Objectives of the Organization:

- To promote and provide quality education to children who are socially & economically deprived
- To eliminate social and cultural discrimination that limits the demand for girls education
- To promote human dignity and awareness of duties & right
- To undertake activities for accelerating social reform through educational & economic upliftment
- To extend and access cooperation from likeminded individuals associated with different organizations, to advocate & network for social issues.
- To extend academic and organizational support for establishment of educational institutions in backward area
- To promote and support community health action through voluntary as well as governmental initiatives
- To educate people on the various aspects of self employment, encourage and assist in linking them with different financial institution to establish their own means of employment.

Vision Statement

To build a society based on promoting socio-economic justice, social sensitivity and empowering deprived group in a manner that they become self-reliant and work collectively for social change.

The Mission

EFRAC is committed to work for the holistic development of the people, living in dehumanized and deprived conditions in the society without any discrimination of caste, creed and religion.

Strategies of the organization: EFRAC believes that Rights are inalienable. EFRAC has been advocating for establishing rights based and is working for having staff and women's entitlement to the resources to make economically self-reliant. EFRAC will make a positive difference in the lives of resettled, migrated and others in the project area by ...

- Delivering services & Engaging in Advocacy
- Area & Community identification & selection
- Community Participation, Community Mobilization & Capacity Building
- Advocacy & Networking
- Enabling non violence conflict resolution awareness
- Facilitating community education that will promote and foster non discrimination, non violence, understanding and corporation in order to achieve mutual respect, inclusiveness, harmonious relation and effective participation in the community.



B. Executive summary of 2012-2013

We have promoted community based groups which may take over the social initiatives after certain year of time period in terms of ensuring sustainability and in this regard we injected Education as a social development tool for society in all perspective from last 14 years. During implementing education program we came across different needs for different community around like mothers of children and it envisages us to diversify in other important social issues related to women like Health, Livelihood and special thrust on accessing Rights.

Education: EFRAH experienced a wonderful opportunity working with socially & economically deprived children to promote the quality education through 30 integrated learning centers along with receiving nutrition through mid day meal for 1000 children. Apart from active learning in centers, other activities like Child Rights concept, leadership building and exposure of children were covered smoothly. 22 MCD School children were covered for sanitation and social & financial education program. Around 870 children were mainstreamed to government school. Library of 84 MCD schools were handed over to children and teachers who were oriented on library management. We sincerely believe that such projects should be replicated in other locations of New Delhi with similar socio-economic and geographical conditions.

Health: This year we were aimed at offering prevention and care services to high risk group such as 1250 Female sex workers through 38 hot spots within community by providing them information, skills they need to manage HIV transmission and improving their access to care, support and treatment services. This program also improved sexual and reproductive health among these populations and improves general health by helping them reduce the harm associated with behavior such as sex work in their respective area like Madanpur Khadar J.J. Colony, Gautampuri, Jaitpur, Badarpur and Ali Gaon area, New Delhi. On the other side, same intervention has been started with 10000 migrants in Okhla Industrial area where regular check up through doctors, counseling, behavior and counseling adopted as a continuous process. 1716 Sanitary Napkins were distributed among adolescent girls and women under women menstruation and hygiene programme. 95 cadres from community were developed on WATSON. Around 2700 beneficiaries were benefitted through health camps & weekly OPDs organized on different themes like Anemia, Tuberculosis, Cervix Cancer, & HIV /AIDS. Around 4 lakhs condoms were distributed among female sex workers and 2338 female sex workers were counseled on safe sex practices and health components.

Livelihood (SHG & Vocational Training): As a part of livelihood promotion policy EFRAH provided returnable grants rather than outright grants to marginalized but potential women to introduce business orientation in their working and invariably to women formed into self-help



For Smile of Every face

groups. Finally, credit is indeed needed by the poor as one of the important inputs for livelihood enhancement. To that extent SHG providing credit meet their livelihood initiatives. This aspect is well recognized by community women and it has given lot of inputs on the SHG formation. Around 400 underprivileged women were covered through 25 SHGs whose saving is Rs. 3,46,800 and they are rolling with an interloaning figure of Rs. 726,600. They have generated an interest of Rs. 78334 within a year. SHG members were capacitated on financial management of SHG and trade initiatives. 28 women initiated self business in market while 167 women are engaged through income generating activities at home. On the other side 543 adolescent girls/women & boys were covered through vocational training for their self reliance, economic freedom and improved social status. It was very much rewarding for community as well as for the organization and focus area was providing skill development promotion among these women, girls and boys. 284 adolescent girls & boys were placed successfully while 163 are engaged in income generating activities.

Community Development (Entitlement, Schemes & Rights) - A holistic approach is taken to conceive welfare as a process in which the “service recipients” could turn to become “resources” of the community and these are rights for residents of slum area community to benefit. In this regard, EFRAH facilitated the program to ensure social entitlement and basic government schemes like enrollment of 4100 community members for UID card (Adhar), 374 families for Rashtriya Swasthya Bima Yojna, 300 beneficiaries in Swarn Jayanti Sahri Rojgar Yojna etc. 981 women were given awareness on different legal issues, Fundamental rights, child Rights, Dowry prohibition Act, Domestic violence Act, consumer protection Act, Women legal Rights Etc. Apart from those approximate 4045 beneficiaries facilitated through Help Desk Counselor in obtaining different Govt. schemes and certificates related to death, birth, disability, caste and income certificates etc. We are running two mahila panchayats to provide legal awareness, to help women in need & to provide legal assistance for needy women in terms of awareness generation, counseling and referring legal assistance for domestic violence. The name of mahila panchayats are “NAI ROSHINI” which consists 25 members running in Shaheen Bagh area & 25 members in Batla House area . The main motives of these panchayats are facilitating women on domestic violence, women security, dowry etc. 76 cases has been registered in this year. Now, Mahila Panchayats have started taking cases and resolving them at the community level. These cases pertain to bigamy, maintenance, domestic violence, alcoholism and other issues. In most of the cases Panchayats have been able to resolve the cases at their own level. In some cases, they had to take joint action to bring pressure on the men concerned so as to obtain redressed for the women complainants. Around 500 members participated in public hearing to highlight community problems in front of stakeholders/jury members.



For Smile of Every face

CBO's Development (Agan Samooh, CRMG, and CMG): We gave major thrust to evolve the ground for governance and leadership among marginalized and deprived community. In this regard community based groups as 04 Agan Samooh comprising 100 women, 01 Community Resource Management Group (CRMG) comprising 20 women leaders and 01 Crisis Management Group (CMG) comprising 15 female sex workers is functioning in area. Agan Samooh is functioning at block level and taking up the issues of girls enrollment, school visit, SMC formation while CRMG is functioning at area level with a purpose to raise the community needs in their respective area on education, health and entitlement related matters. Crisis Management Group is functioning for High Risk Groups women (Female Sex Workers) to mitigate any sort of crisis in day to day life. Stakeholders committee is added as a new group in area where migrant workers are present in large number.

Training Program: We imparted several capacity building programs for various age group and their major concerns like Right to Education with parents, adolescents and youth of area, skill development with adolescent girls and youth for livelihood promotion, training of teachers for systematic & quality education, group management to community groups. In this regard, 100 SHG members were capacitated and exposed on income generating activities.

Network: We have established the network of 11 similar minded civil service organization to address the issue of girl's drop out in school, sexual harassment of girls, domestic violence and to protect children in respective areas. On the other side, we are a network partner of Delhi Right to Education forum, Bal Adhikar Abhiyan, Delhi Forces and Jan Swasthya Abhiyan. Area and organizational level information is being discussed in networking meeting and at the later stage, it is being addressed to concern department.

Challenges: SMC rules have been notified in Delhi but it was found that information is increasing gradually among the administrators and teachers on RTE. SMC formation is in slow pace but started in few schools. Process of information is not up to the mark from school authority side. On the other side, RTE is implemented in small area which is not very much visible at Government Level. It is also realized that advocacy on overall school's need (Shortage of Teachers, Infrastructure, school building renovation etc.) should be intervened at policy level. Availability of fund in GRC is another challenge organization faced. Education level of Aangan Samooh members is a constraint regarding documents preparation and official visits.

Programme Report

1. Education

Engagement of children as a labor is very much hammering in project area. Engagement of Girls either in taking care of younger siblings or working as a domestic helpers, functionally illiterate condition of children despite of various government education programs like SSA, poor quality education in government schools, lack of awareness on education, non existence of SMC in government schools of area, poor/inadequate infrastructure facilities in schools, absence/inadequate facilities for pre schooling & remedial education, lack of time, ability & resources on the part of the parents of the underprivileged children to take care of their small children (3 to 6 years) when both the parents are away at work in the absence of adequate crèche facilities activated by the state, inadequate & imperfect learning in the government schools are hammering problems in such area. EFRAH is addressing all the above said problems through different tools which are as below:-

1.1 Integrated Learning Centers for children: These centers were established to assist children in developing their skills and attitude required for entry and participation in the learning process, to facilitate individual learning style, to create positive attitude towards learning and to prepare children to go and continue in the school. In fact one of the causes of high dropout rate from primary schools is absence of pre-schooling. EFRAH organized community people to run pre-schools for their children aged 3-5 so that they enter primary schools with adequate preparation. The projects covered areas from early childhood care and development to continuing and lifelong education. Special focus was on quality education and public participation and empowerment of the communities.

No of children covered:	1000
No of Learning Centers:	30
No of Balwadi centers:	15
No of children in Balwadi:	460
No of NFE centers:	06
No of children in NFE centers:	180
No of REC centers:	12
No of children in REC centers:	360
No.of mainstreamed Children:	870



EFRAH operates Integrated Learning Centers with a view to developing the first generation learners coming from poor families. Through this program EFRAH operates pre-school to stimulate and prepare

For Smile of Every face

the children for sustainable enrolment in mainstream primary education. EFRAH is running non-formal primary education centre for out-of-school poor children who assist their parents in earning livelihood or drop out. EFRAH delivers continuing education program aiming at capacity building of the poor allowing them sustainable access to the employment opportunity to make them partners in social progress. On the other side, EFRAH organized parent teacher meeting at the end of every month, this meeting are very important to keep interest of parents in child study and teacher more responsible and accountable towards his duty and also discussed the problem of the children such as performance, attendance, participation during the class activity and health issues of child. The development of a partnership between the teacher and parents had multiple benefits for both parties. The parents provided the teacher with direct feedback regarding successful or unsuccessful classroom teaching strategies, thus assisting with program evaluation and planning. The parents also provided insights into their children's capabilities, which altered the teacher's expectations of the children.

1.2 Mid Day Meal: It helped 700 children out of 1000 children in three different ways as accessing nutritious food, increasing nutritional level and tendency to stay in learning centers which reduced the dropout rate.

Another significant impact realized was that feelings of brotherhood Fraternity and developing positive outlook through combined food intake for children hails from

No of Children served everyday : 700
Frequency of Meal: 5 days in a week

different religions and castes. Women SHG members took the responsibility of providing warm & cooked meal 20 days in a month to all children attending the learning centers. It gave an opportunity to SHG women as income generating activities and expertise in cooking & marketing management in their area. Keeping in mind the nutrition level required for children, day wise menu is developed as per below chart:



1.3) Vocational Training

Recognition to the equal status of disadvantaged women in the society is the main problem of resettlement and slum area women. It has been packaged with common people friendly method and which enhanced the level of Education and income generation interest among the girls at the same time taking care of their Nutritional status through Nutrition supplement program.

Besides Vocational skill development, it is aimed to provide a forum for peer group interaction to improve their social and negotiation skills within and outside the family. It is a safe space for adolescents to discuss issues that concern them, and to empower them to work together to explore solutions. The Vocational Training Centre maintained close link with adolescent groups/youth groups, already working with organization and also promote regular interaction with community people and community groups, which are working at the community level. In order to achieve the same, these centers identified women community leader for acting as resource people. The duration of Vocational Training Centre course was six months and one year respectively.

No of Girls capacitated : 400
No of Women capacitated: 113
No of Boys capacitated: 30
No of beneficiaries got certificate: 359
Name of Courses: Beauty Culture, Stitching and Computer Application
No of beneficiaries got placement: 167
No of beneficiaries engaged in IGP: 117



1.4) Community Awareness Program on Right to Education:

Poor quality of education/infrastructure, lack of commitment among school teachers and resource, Non-existence of the School Management Committees (SMCs) in the Government Schools is the problem in Delhi. In this connection EFRAH initiated a drive to aware/ build the capacity of parents in community in context of Right to Education act and building pressure on school authority to involve more parents in Parents Teachers Association and take this association in a broader perspective as School Management Committee.

Regular meetings were conduct with school's principals/teachers at schools level as well as with parents at community level. Regular meeting become fruitful in context of involving more parents in Parents Teacher Association, readiness of school authority to listen the rights of children in terms of infrastructure, teachers student ratio, toilet and drinking water facility in schools etc. EFRAH imparted orientation & training on SMC rules and responsibilities. Following matters came in light from teachers and parents point of view:-

No of Govt. school covered :10
No of members in PTA: 146
No of members as parents in PTA :67
No of meetings conducted: 12



1.5) Community Groups Strengthening (Aangan Samooh & Community Resource Management Group):

The whole project area has been divided into four Zones and in each zone there are 25 community members organized themselves as Aangan Samooh. From each zone five representatives including community mobilizer have been selected with consultation of house hold of the particular area. In each zone a small group (1 Community Mobilizer+4 Members) has been formed and all the zones organize themselves as a 20 potential members into Community Resource Management Group. In total, 4 Aangan Samooh have been formed in a zone having 100 community members and 01 CRMG having 20 members as a peoples association at the project area level.

The consultation meet is regularly conducting at every Aangan samooh to address, identify and priorities their needs and problems which has been addressed through various civic authorities. A series of capacity building program is being organized on various subjects like leadership, communication, organization management, legal awareness for the representative of the different community level organization structure. These

- | |
|--|
| No of Aangan Samooh: 04 |
| No of members in each Agan Samooh: 25 |
| No of members in Aangan Samooh : 100 |
| No of meetings in Aangan Samooh : 96 |
| No of CRMG: 01 |
| No of members in CRMG: 20 |
| No of Meeting in CRMG : 12 |

representatives are continuously being exposed with various municipal and other departments, which further enhance their capacity to claim their stake in the informal settlement development especially in the civic activities. The CRMG may also put their claim in the management and maintenance of the resources/amenities within the community i.e. as water connection, toilet complexes management etc.

1.6) School Library Program: During last seven years, EFRAH established 84 Libraries in 84 MCD Schools and handed over to school authorities after successful orientation & training on library management as well as on Child Management Committee. Around 30000 children were covered in this program. The condition of children in MCD schools in context of reading were very poor, they had no interest in reading books. The main motive of Room to Read was to increase the interest of reading in all the children through the books. Room to Read prepared attractive books for these children so that they can learn through interesting way. The following report presents the overall representation of the program and activities of EFRAH on creating reading interest in the children of MCD schools. Apart from this it shows the achievements and challenges that were faced during the year and the way of solutions that



For Smile of Every face

were taken that time according to the problems. Children learn according to the environment, so we provided them a reading environment within the school.

At present EFRAH is running 10 Reading Rooms in MCD schools of West Zone and rest of reading rooms are hand over to school authorities. All these Reading Rooms are located within school premises. We have separate Reading Room in 5 schools and rest of the schools have shared room in which books are either kept in a school almirah or the Headmaster's room or a computer room.

Such kind of response from school reflects that the school authorities are keen and supportive for such programs even though there is a lack of space and sufficient resources. Apart from that all children actively participated in each and every activity and a huge amount of support was given by the school headmaster and staff for the smooth functioning of these functions and the library program. EFRAH celebrated all the events and festivals in Reading Room libraries. This program is handed over to school children and teachers in a complete way.

Access & usage of books during the year

No of Schools: 10

No of books checked out: 7368

No of children checking out books: 8688

No of Teachers checking out books: 51

Accessibility of hours per week: 20 hrs

1.7) Social & Financial Education: This program is built on the core principles of Child Social & Financial Education. Program's teaching methodology encourages "learning by doing". Through fun games, activities, songs and workbooks, children are encouraged to take an active role in the learning process and group activities within the community. As an initiative at beginning level, EFRAH focused to make a common understanding & involvement through conducting Workshop with Teachers, meeting with teachers, Organizing camps & Mela to build children of healthy attitudes, awareness & responsibilities. The program focuses on sensitizing the children to one another and to their environment, developing the confidence into children to take positive steps towards bringing about a change in their environment and Helping them to identify issues of concern and working towards positively changing their environment.

EFRAH considers teachers as resource people impart all around education and to create and strengthen the process, which allow for the participation of children at the school and community levels. EFRAH enable children for proper utilization of resources & awareness on concept of their roles & responsibilities towards child right for the foundation of responsible & sensible society. Book fare, exposure visit of children and Aflatoun mela were the activities which catalyzed children as well as sensitized school stakeholders.

Area of Intervention: MCD Schools, West Zone, Delhi

No of schools covered: 22

No of children covered: 10000

2. Health (HIV/AIDS, RCH and Health Camps):

2.1) Target Intervention(HIV/Aids) : EFRAH Target Intervention program is aimed at offering prevention and care services to high risk group such as Female sex workers and Migrants by providing them the

information, means and skills they need to manage HIV transmission and improving their access to care, support and treatment services. Intervention with Migrants was the period of 04 months in this year.

This program also improves sexual and reproductive health among these populations and improves general health by helping them reduce the harm associated with behavior such as sex work. EFRAH has been completed his annual coverage target and working with Female Sex Workers and migrant workers on increasing awareness related to STD/HIV/AIDS as well as on control and prevention including availability of treatment option for STI in the targeted HRG population.

No of HRG contacted at least once (new contacts) : 1262
No of HRG who have come to the project clinic one (RMC): 3563
No of HRG who are screened for Syphilis:1250
Total no of condoms distributed to HRGs:360476
No of HRG counseled by the counselors: 2338
No of HRG referred to ICTC: 1125
No of HRG tested in ICTC: 739
No of HRG found positive in ICTC : 1
No of positive cases referred to ART: 1
No of incidents reported against right violation of HRG: 00
No of reported incidents addressed within 24 hours: NA

HRG visited project office and they have been treated for presumptive & syndromic treatment. EFRAH managed the availability of doctors thrice in a week for 3 hours every day. We have a skilled counselor who gives the social and emotional support to the clients through one to one and one to group interaction sessions. On the other side drop in center add the maximum clients with our program. They call safe or free space for sex workers where, they could enjoy with some entertainment instruments like Tabla, guitar, dholak, Television, harmonium and other instruments. Our DIC is two streets far from TI office so sex workers generally visit that space and feel that this is their place. The main entertainment activity of sex workers is dancing; they dance on local song or with dholak or tabla. Sometime ANM/Counselor facilitated educational and entrainment session with them.



Crisis Management Committee: This committee is functioning with peer educators and target group and with three peer educators. Right Now, two separate committees namely “Umang” and “Khusi” comprising of 11 members each has been formed. Purpose of the committee is to solve conflicts/problems (violence, refusal of money) faced by female sex worker in day to day routine. Each member knows the committee’s objectives and work very well. Many crisis cases of the HRG in our field

For Smile of Every face

have been short out through a committee initiative and it as well. Phone number of Committee president and secretary is in practice for urgent communication related to any crisis. In this year no such grim case has been reported by FSWs to Crisis committee but 05 cases of violence have been solved.

2.2) RCH: Our Reproductive child health program provided the services for preventive, curative and health promotion of the women and children with special focus on adolescent girls. Information on Care of the child, its nutrition, immunization, importance of breastfeeding, weaning, how and when to start solids, and how to give home cooked food to the children and what all can be given to them are all the information provided to the women and young girls in the community.

On the other side, we organized nutrition camp on monthly basis in our whole suggested areas. Basic themes like Infancy, Growing Children food requirement, food balance at adolescent stage, Pregnancy, Lactation and Old Age have been successfully conducted. Health seeking behavior of the community people is developed through OPD & nutritional camps on monthly basis while in some area like Ali Vihar we conducted OPD at fortnightly basis.

<p>No of OPD Organized: 37 No of beneficiaries diagnosed: 1973 No of Nutritional Camps: 12 No of beneficiaries in Nutritional Camp: 330</p>
--

2.3) Health Camps: Although there have been limited efforts to capture the health of people in urban slums of Delhi, we managed successfully to met the demand for basic health amenities in terms of regular check up of community as well as medicine distribution. Motivated & Committed doctors provided 3 to 4 hours during each health camp and facilitated community women for the concerned diseases, prevention and proper treatment.

We raised awareness level of slums community on health issues and provided primary health care services to the vulnerable community with especial focus on women and vulnerable families residing in the area. Themes of camps were decided as per the need of community like as (HIV/Aids, Anemia, Cervix Cancer, cancer, T.B. etc).

<p>No of Health Camps organized: 07 No of beneficiaries in health camps: 2148</p>
--



3. Gender: EFRAH is running Women Centered Community Development program to mount the growth of slums & resettlement colonies women, to reduce adverse sex ratio, to increase female work



For Smile of Every face

participate rate and reduction in domestic violence cases and crime against. Following components have been covered during this year:- women.

3.1) Self Help Group Management: EFRAH promoted Self-help groups to create steady sources of income to fight poverty and paving a way for financial independence. SHG members are in organized shape and evolving with various skills in a gradual manner. Each group has a number of 15 to 20 members. All records are maintained by group workers properly and checked it by facilitator at regular interval of time.

A capacity building workshop is conducted for all groups on concept of SHGs (Meetings, loaning, Record Keeping, linkages, income generation activities) etc. An exposure visit was conducted for all groups in NSIC to have an idea of Income Generation Activities plan & execution.

No of Self Help Group : 25
No of members in SHG: 400
No of meetings conducted: 204
Total Saving of SHGs: Rs. 3,46,800.00
Total Inter loaning: Rs. 7,26,600.00

3.2) Help Desk: EFRAH facilitated the program to ensure government schemes like enrollment of community members for UID card (Adhar), needy families for Rashtriya Swasthya Bima Yojna, SJSRY and Majdoor Nirman Bima Yojna, Bank Account opening etc.

Apart from those various community members facilitated through Help Desk Counselor. Our help desk provides all around informative support and services through Help Desk Counselor in obtaining different Govt. Schemes and Certificates like Death, Birth, Disability, Caste, and Income Certificates Etc.

No of community members counseled: 4045
No of beneficiaries received UID Card : 4100
No of families received RSBY: 374
No of beneficiaries in SJSRY: 300
No of beneficiaries in MNBV: 217

3.3) Domestic Violence: EFRAH is running mahila panchayats to provide legal awareness, to help women in need & to provide legal assistance for needy women. The name of mahila panchayats are "NAI ROSHINI" in Shaheen Bagh area & "MAHILA SHAKTI" in Batla House area .

These mahila panchayats conducted meeting twice in a month and addressed all the concerned cases related to domestic violence & marital conflict. In between the year, legal awareness camp is also conducted to sensitize community women in women rights and existing law for domestic violence.

The main motives of these panchayats are facilitating women on domestic violence, women security, dowry etc. 62 cases has been registered in this year. Now, Mahila Panchayats have started taking cases and resolving them at the community level. These cases pertain to bigamy, maintenance, domestic violence, alcoholism and other issues. In most of the cases Panchayats have been able to resolve the cases at their own level. In some cases, they had to take joint action to bring pressure on the men concerned so as to obtain redressed for the women complainants.

No of Mahila Panchayats : 02
No of members in MPs: 50
No of meetings conducted: 95
Total cases discussed: 53
No of cases solved: 40
No of Community Meetings: 99
No of legal awareness camp: 01
No of Counseling session held: 140
No of cases referred: 13

4. **Rights:** EFRAH facilitate community to capitalize their rights in education, livelihood and on legal aspects especially with girls and women.

4.1) **Rally for Enrollment and against Sexual Harassment:** Enrollment rally is marched in Madanpur Khadar area to seek community parent's support for child/girl's enrolment in forthcoming academic session. Around 130 girls participated in this rally. The purpose of rally was to advocate and mobilize community for awareness, understanding and realization for girl's education in area. In this regard, information is disseminated in area before rally march. Adolescent girls came together in project office and developed slogans based on anti eve teasing. They prepared 13 different slogan sheets for rally march. Duration of rally march was 3 hours which covered all the pockets area including schools. In this context, information is given to Police officials to avoid any hindrance during rally march. 232 out of school going children have been identified & enrolled in school. Mothers of girls and female community members supported and encouraged their family girls regarding accessing education/school. On the other side, around 145 girls participated in rally against sexual harassment. The purpose of rally was to advocate and mobilize for awareness, understanding and urgent action on the issue of girl's retention in area. It is highlighted how bad culture like eve teasing is a barrier for girl's education in Khadar area. In this regard, information is disseminated in area before rally march. Adolescent girls came together in project office and developed slogans based on anti eve teasing. They prepared 12 different slogan sheets for rally march. Duration of rally march was 3 hours which covered all the main lanes of 5 Khadar area including schools. In this context, information is given to Police officials to avoid any hindrance during rally march. Confidence level of girls and their participation in other activities is increasing actively after this rally. Mothers of girls and female community members are supporting and encouraging their family girls to raise their voice against such circumstances.



4.2) **Public Hearing:** A public hearing program on Education , Health & Women/girls safety is organized by Agan Samooh & Community Resource Management Group under the facilitation of EFRAH in Madanpur Khadar Area, New Delhi with following objectives:-

- To draw attention to the situation of children in the education system in Madanpur Khadar Area and the barriers they face

- To draw attention to the situation of health services availed by the community
- To facilitate dialogue between Children, Parents, Civil society and the other stakeholders.
- To disseminate information on the status of enforcement of the RTE for children & health problems faced by community



Around 20 cases on Health issues, 50 cases on Women/Girls safety issues & around 45 cases on Education/Right to Education issues were discussed with different groups like women, children, and adolescents. Community demand is summarized and community leaders presented these issues in front of community & invited stakeholders along with possible solution mapping. Mr. M. M. Vidyarthi, Member DCPCR chaired the program while Mr. Amod Kanth, Ex Sr. Police official was the chief guest. Mr. Ashok Agarwal, Senior Advocate, Delhi High Court boosted the community on redressal mechanism. Community women & girl adolescent sought the relevant status & problems on Education, Physical Health, Water & Sanitation, and School matters. Demands were sought on each issue and cases affidavits were submitted to DCPCR.

5) Challenges: SMC rules have been notified in Delhi but it was found that information is increasing gradually among the administrators and teachers on RTE. SMC formation is in slow pace but started in few schools. Process of information is not up to the mark from school authority side. On the other side, RTE is implemented in small area which is not very much visible at Government Level. It is also realized that advocacy on overall school's need (Shortage of Teachers, Infrastructure, school building renovation etc.) should be intervened at policy level. Availability of fund in GRC is another challenge organization faced. Education level of Aangan Samooh members is a constraint regarding documents preparation and official visits.

6) Acknowledgment

I would like to thank all the members of General Body for their guidance and support over the years as well as our team of staffs for their commitment, dedication and hard work. It gives me great pleasure to report that this hard work and the values of transparency and accountability of the organization have been recognized as good performing organization in social development sector. **EFRAH** also extend it



For Smile of Every face

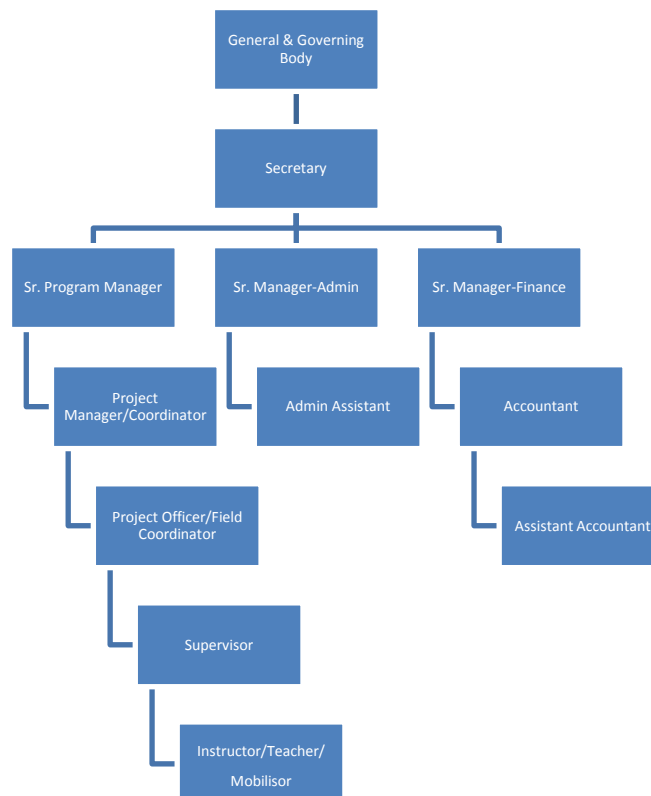
deep sense of gratitude to the concerned officials of all levels whose cooperation and keen interest supported us in the endeavors of deprived community wellbeing.

7) Organizational Structure

Our Board members

S. N.	Name	Father/Husband Name	Sex	Age	Designation	Profession
1	Mr. Rajesh Jaiswal	Sh. R.L.Gupta	M	56	President	Business Man
2	Mr. Sayeed Ahmed	Sh. Zaheer Ahmed	M	40	Secretary	Social Worker
3	Munnawar Khanum	Sh. Zahid Khan	F	48	Treasurer	Education Supervisor
4	Mr. Zahid Hussain	Md. Nazar Hussain	M	55	Member	Social Worker
5	Jahanara	Umar Daraj	F	37	Member	Program Director
6	Santosh Samal	Mr. N. C. Samal	M	50	Member	Executive Director-Dalit Foundation
7	Ms. Nasreen	Sh. Mehdi Hasan	F	38	Member	Social Worker
8	Kausar Praveen	Mohd. Akil	M	43	Member	Social Worker
9	Ms. Prabhati Das	Mr. S.N Das	F	42	Member	Social Activist

Administrative Structure:





For Smile of Every face

Community Volunteer : Around 23 MSW students from Jamia University & IGNOU turned up this year to complete their internship related to Informal Economy livelihood experience learning and activities going on for their rights related to education, health and livelihood.

8) Supporting Partners

I take this opportunity to thank our supporting partners for sharing our collective dream and contributing their guidance, supports and thoughts towards its realization. We extend standing invitation to all the well wishers to visit its operational area and share their experiences to enable the functionaries in enhancement of their knowledge. We are very much thankful to following funding partners:-

- Essel Social Welfare Foundation.
- Oxfam India
- Delhi State AIDS Control Society
- Mission Convergence, Govt. Of Delhi
- Bharat Heavy Electricals Limited, Delhi
- Delhi Commission for Women
- Meljol, Mumbai
- Room to Read
- Delhi Commission for Protection of Child Right
- Schools of Delhi administration,
- Schools of MCD
- Delhi Police
- Individual, friends, community

9) Offices address

1. Empowerment for Rehabilitation, Academic and Health (EFRAH)

Community Centre, 2nd Floor, DDA Flats Kalkaji,
Behind DDA Flats Market New Delhi-110019

Phone Number: +91 11 26020132, **Fax-** +91 11 26020132

Mobile: +91 9971444366, + 91 9990121503

Email: efrahindia@gmail.com, info@efrahindia.org.in, efrah@rediffmail.com

Website- www.efrahindia.org.in

2. Regd. Office and Correspondence Address

Flat Number 393, Block Number 13,
DDA Flats, Kalkaji, New Delhi 110019

3. Project office

C-118, Madanpur Khadar kachhi Colony,
Madan Pur Khadra Resettlement Colony, Samosa Chowk,
Sarita Vihar, New Delhi- 110044.

Phone- 011-29946107, +91-9999363886, 9868259764

4. A-195, Aali Vihar,

Near Beri Bagh/ Peer Baba Ki mazar,
Aali Village, Badar Pur, New Delhi.

Phone- 011-29946270,



For Smile of Every face

5. Uttar Pradesh

EFRAC C/o Mr. Sheikh M. Ansari
House No. 181, Mohalla- Bhikampur, P.O. Auraiya,
District Auraiya, Uttar Pradesh-206122
Phone - 05683-245181, +919971444366

10) Financial Statement:

EMPOWERMENT FOR REHABILITATION ACADEMIC & HEALTH (EFRAC)			
INCOME & EXPENDITURE ACCOUNT FOR THE YEAR THE YEAR ENDED 31 MARCH 2013			
PARTICULARS	AMOUNT	PARTICULARS	AMOUNT
To Administration & Management Expenses	334,893	By Donation	590,400
To Awareness Programm Expenses	939,254	By Grants received from:-	
To Reproductive & Child Health Program Expenses	214,498	Room To Read	169,152
To Capacity Building	5,346	DCW	143,185
To Community & Education Committee Expenses	64,110	Meljol	606,700
To Advocacy & Workshop Expenses	1,420,289	BHEL	1,658,630
To Teaching, Learning, IEC Material Expenses	1,081,171	Essel Social Welfare Foundation	2,868,800
To Meeting and Training Expenses	590,206	Delhi State Aids Control Society	2,057,153
To Books & Stationery Expenses	145,930	OXFAM India	1,500,000
To Miscellaneous Expenses	23,569	GRC	1,681,380
To Survey Exp	70,245	EFRAC General	468,050
To School Library Furniture Expenses	65,000	By Membership Fees	1,188
To Conveyance & Travel	305,229	By Interest	60,393
To Rent	1,158,130	By Other Income	14,314
To Salary & Partime Personal	3,384,628		
To Audit Fees	10,000		
To Exposure Visit	56,145		
To Mid Day Meal	1,292,790		
To Bad Debts	416,253		
To Depreciation	113,097		
To Excess of Income over Expenditure	128,562		
Total	11,819,345	Total	11,819,345

<p>For Empowerment for Rehabilitation Academic & Health (Efrac)</p> <p style="text-align: center;"><i>(Signature)</i> Secretary</p> <p style="text-align: center;"><i>(Signature)</i> Treasurer</p>	<p>As per our report of even date for Keshari Keshari & Co. Chartered Accountants Reg. No. 008646C</p> <p style="text-align: center;"><i>(Signature)</i> (Deepak Kumar Sharma) Partner M. No. 520963 Date: 10-09-2013 Place: Noida</p>
---	--

Date: 10-09-2013
Place: Delhi

Empowerment For Rehabilitation Academic & Health (EFRAC), New Delhi

11) Financial Facts:

Highest Paid Salary (Full Time)	Rs. 28000 monthly to Senior Program Manager
Lowest Paid salary (Part Time)	Rs. 2500 monthly to Para Legal Worker
Honorarium paid to Secretary	Rs. 178335.00
Honorarium paid to Board Member	NA
Travel outside abroad	NA

12) List of Board Members: Given above as Organizational Structure.